



- [Jacob](#)
- [My talk](#)
- [My](#)

The Spell Checker for ASP.Net Web Applications

[preferences](#)
[My watchlist](#)

- [My contributions](#)

- [Log out](#)

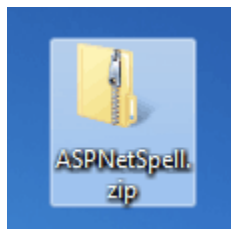
[Page](#) [Discussion](#) [edit](#) [History](#) [delete](#) [Move](#) [Protect](#) [Watch](#)

This guide covers basic installation in an ASP.Net Web Application:

- For MVC Installation and usage - please read the [ASPNetSpell MVC installation and hello-world tutorial](#)
- For use with the new Razor framework - please read the [ASPNetSpell Razor installation and hello-world tutorial](#)

[\[edit\]](#) 1.Downloading the Software

ASPNetSpell can be [downloaded](#) from www.aspnetspell.com as a zip file.



When you have downloaded the package, unzip it to a convenient location on your hard disk for future use. *We suggest C:\ASPNetSpell* or similar

There are 2 main sets of files that you have downloaded:

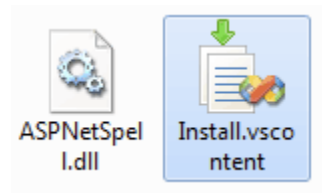
- AspNetSpell.dll - Add this to your Visual Studio toolbox. (see below)
- A directory of files labelled ASPNetSpellInclude - Copy and paste this to the root folder of your website project (see below). You do not need to add this to the application in Visual Studio.

[\[edit\]](#) 2. Adding ASPNetSpell.dll to the Visual Studio ToolBox

[\[edit\]](#) Using the Automatic Installer

[\[edit\]](#) Visual Studio 2005 / 2008 / 2010

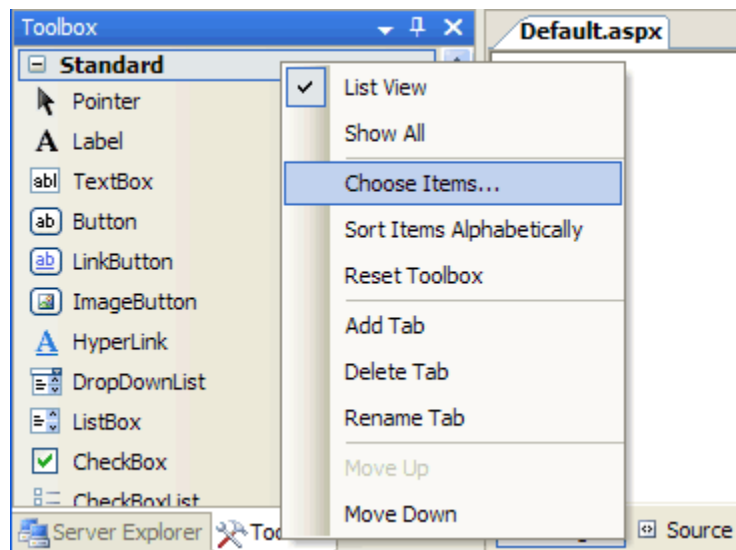
1. Unzip ASPNetSpell
2. Close Visual Studio
3. Double Click on *ASPNetSpell/Install.vsccontent*
4. When you re-open your website in Visual Studio you will now see [SpellButton](#) and [SpellTextBox](#) the the "My Controls" section of the toolbox.



[\[edit\]](#) Manually installing the DLL

[\[edit\]](#) Alternative Installation Method for Visual Studio 2000, 2003, 2005 / 2008 / 2010

Right click on the Visual Studio ToolBox and pick "Choose Items...". In the new dialog, click "Browse...", then pick the ASPNetSpell.dll which you downloaded and click "OK". You now have drag-and-drop access to ASPNetSpell for web application development.



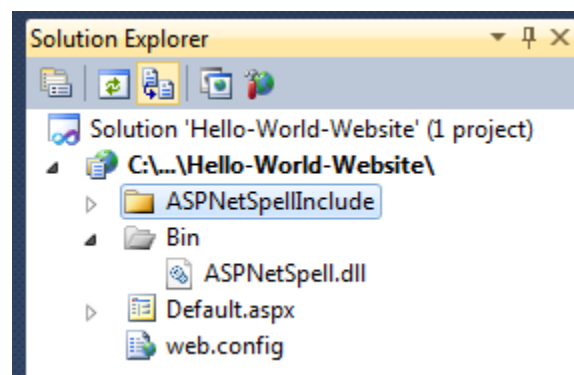
[\[edit\]](#) ASP.Net Runtime Versions

ASPNetSpell.dll comes in 3 different versions for different ASP.net runtime. Make sure to [download](#) the right one.

[edit] 3. Installing the AspNetSpellInclude Directory to your Web Project

After dragging the AspNetSpell component onto a web form, you must copy the downloaded directory AspNetSpellInclude into the root folder of your website. If this location is inconvenient, you can specify another URL for the files using the InstallationPath property.

[edit] The best way to do this is to drag-and-drop the folder into your Solution Explorer from Windows.

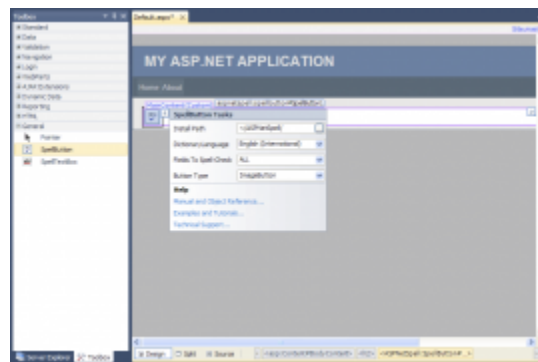


[edit] 4. Getting to Hello World

Once you have installed the ASPNetSpellInclude directory properly, you are ready to start spell checking. Just Drag the [SpellButton](#) into your webs form.

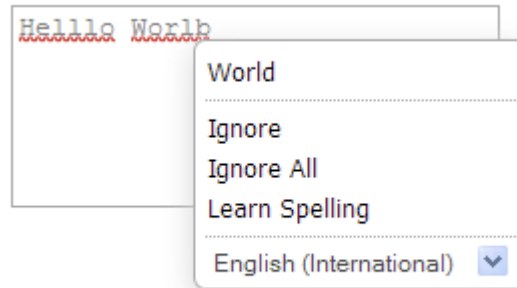
To select the field(s) that ASPNetSpell will spell check, change the [FieldsToSpellCheck](#) property. By default it will spell check every viable field on the page.

If you see a red cross on the screen or are given warning messages - read the [\(Troubleshooting\)](#) guide.



[\[edit\]](#) 5. As You-Type-Spell Checking

Drag the [SpellTextBox](#) into the web form in place of any normal multi-line TextBox. As you type spell checking is automatically provided.



[\[edit\]](#) 6. Installing Dictionaries

The dictionary language which the spellchecker will use is set by the DictionaryLanguage property.

To install dictionaries - you must first download them from www.aspnetspell.com/Downloads.

The value of the Dictionary property should match the file name (excluding the .dic extension). Dictionaries include:

- [English \(International\)](#) - Default Pre-Installed
- [English \(USA\)](#)
- [English \(Australia\)](#)
- [English \(UK\)](#)
- [English\(Canada\)](#)
- [Dansk](#) - Danish
- [Nederlands](#) - Dutch & Flemish
- [Deutsch](#) - German
- [Francais](#) - French
- [Italiano](#) - Italian
- [Portuguese](#) - Portugues - Brazil and Portugal
- [Espanol](#) - Spanish (Americas & Spain)
- [Svenska](#) - Swedish

[\[edit\]](#) Specialist Dictionaries

- [English \(Medical\)](#)
- [English \(Legal\)](#)
- [Engineering \(Scientific\)](#)

To use multiple dictionaries you can use a comma Separated list. E.g. : "English (Canada), Francais"

You can also encode you or dictionaries using the dictionary encoder.

In addition, you can add words to the list by putting them in the file ASPNetSpellInclude/Dictionaries/custom.txt . Put 1 word per line, preferably in alphabetical order for performance issues. This sorting can be achieved using software like MS Excel or EditPlus.

To change the language of spellchecker dialogs and buttons please see [UserInterfaceLanguage](#) property.

[+ Have Your Say](#)

[\[edit\]](#) Downloads

- [Download ASP Net Spell](#)
- [Download Free Dictionaries](#)

[\[edit\]](#) Documentation

- [Getting Started Guide](#)
- [Installation](#)
- [Object Reference](#)
- [Examples & Source Code](#)

[\[edit\]](#) Support

- Read the [Troubleshooting](#) guide
- Free [Support](#) and free Updates
- [Report an Issue](#)
- Get a [license](#)

(C) 2004 - 2011 aspnetspell.com



